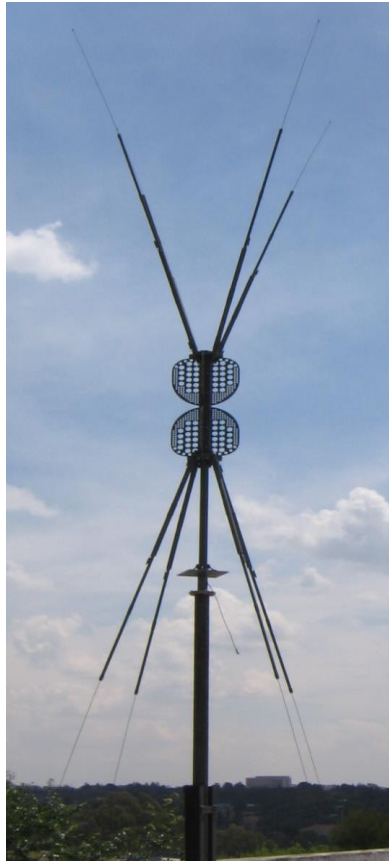


Wideband Omni-Directional High-Power Antenna

20 – 1000 MHz

Product Code: DIPL-A0045

VERSION: 2.9



SPECIFICATIONS

Electrical:	
Frequency range	20 – 1000 MHz
VSWR	< 3:1 over 80% of the band (See graph)
Nominal input impedance	50 Ω
Feed power handling	500 W CW
Gain	See graph
Polarisation	Vertical
Connector	7/16 female
Mechanical:	
Dimensions (h x w)	6 m x 2 m
Weight	36 kg
Material	Aluminium, fibreglass and stainless steel
Environmental: designed to meet the following specification	
Wind survival	160 km/h

PRODUCT DESCRIPTION:

The DIPL-A0045 is an omni-directional high-powered EW antenna that operates over the 20 to 1000 MHz frequency band with a VSWR of less than 3:1 over 80% of the band.

PRODUCT FEATURES:

- Wideband
- Omni-directional azimuth pattern
- High-power handling
- Distributed loading is used to prevent elevation radiation pattern break up
- Lightweight
- Waterproof
- Quick assembly
- Mast-mounted
- Small and compact packaging

Wideband Omni-Directional High-Power Antenna

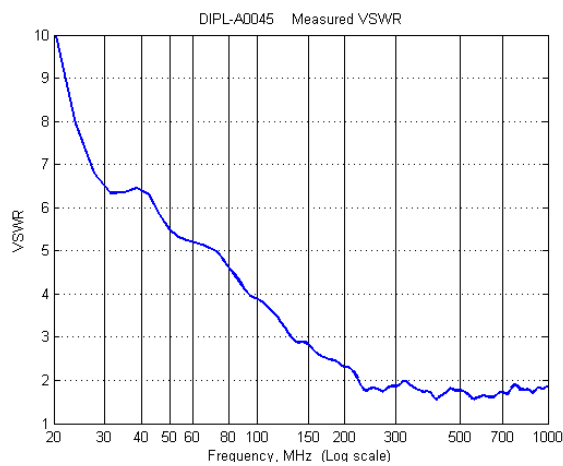
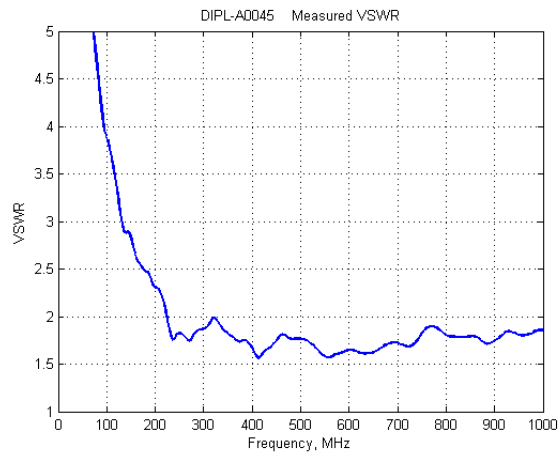
20 – 1000 MHz

Product Code: DIPL-A0045

VERSION: 2.9

VSWR AND GAIN GRAPHS:

VSWR:



Gain:

